

Introduction to ArcGIS Field Maps Spring 2023

SCHOLARS' LAB

Drew Macqueen, MS
GIS Specialist
dmacqueen@virginia.edu

Chris Gist MS, GISP
GIS Specialist
cgist@virginia.edu

Resources

[UVa GIS Library Guide](#) – GIS software, spatial data, consultations & learning

[ArcGIS Field Maps Home](#) – includes overview, tutorials and other resources

[Field Maps Designer](#) – Design interface for ArcGIS Field Maps

[UVa Enterprise ArcGIS Online](#) – spatial data, web maps, and online applications

Create or Login to ArcGIS Online Account

To use Field Maps, you must have a UVa ArcGIS Online account. If you do not have one please create one using these instructions.

*****If you're not a UVA affiliate, or don't have an Eservices login, please stop here and contact us about guest access.**

Go to: <https://uvalibrary.maps.arcgis.com/home/signin.html>

- Click **University of Virginia**

The logo for the University of Virginia, featuring the text "UNIVERSITY OF VIRGINIA" in white capital letters on a blue rectangular background.

- Sign in using your NetBadge credentials.

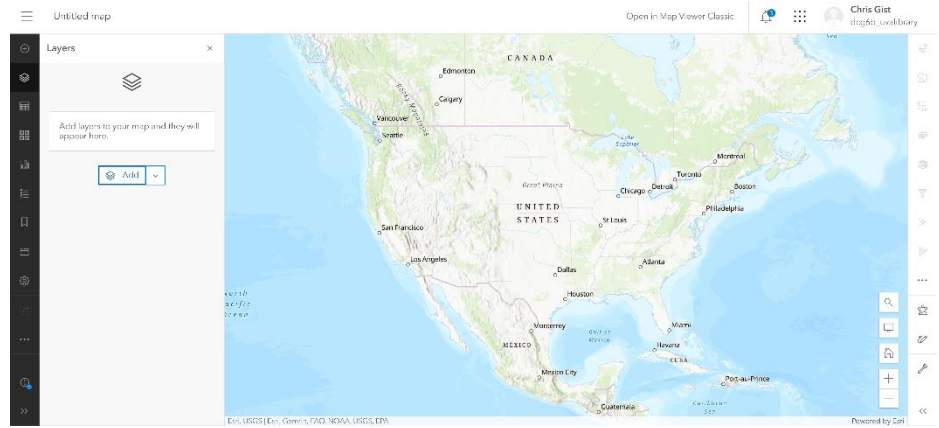
Find and Copy Map

Field Maps starts with a map. We have a layer ready for you to copy and use in your own application.

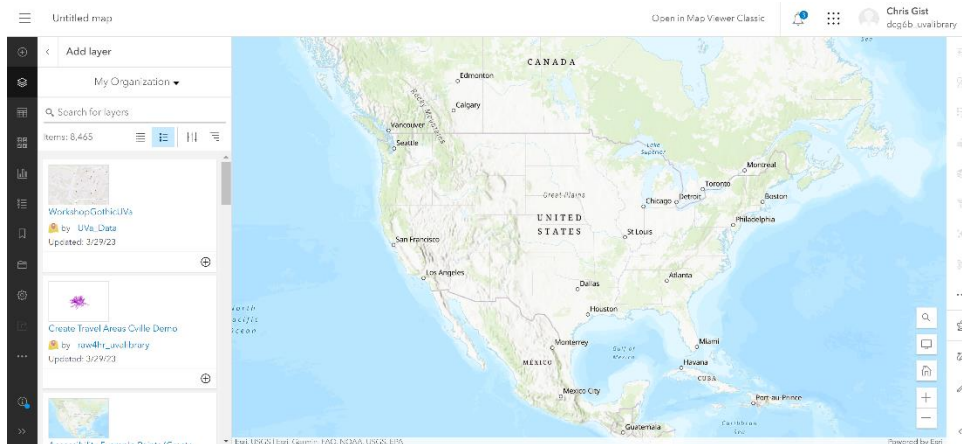
In ArcGIS Online, open a map using the Map tab.

Open map in **Map Viewer**.

Click **Add**.



Search for layer **WorkshopGothicUVa** from **UVa_Data**.

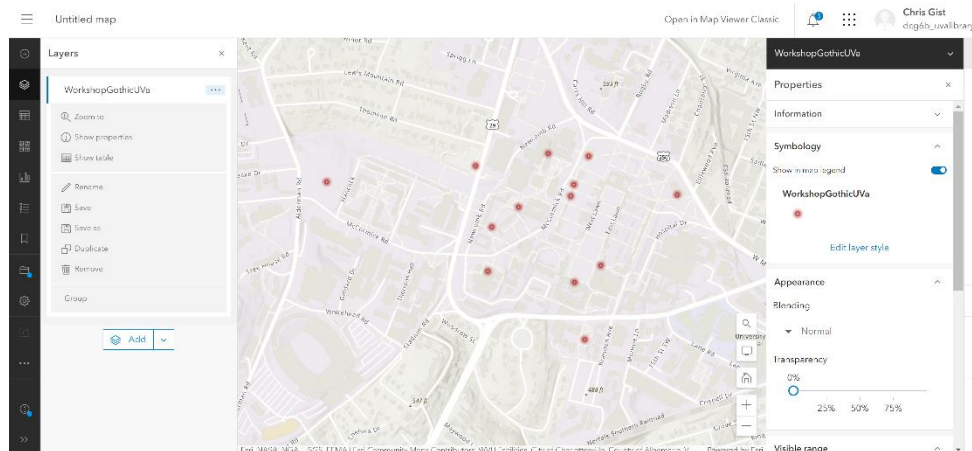


Add the **WorkshopGothicUVa** layer.

Make a copy of the **WorkshopGothicUVa** layer by clicking the continuation ellipses and selecting **Save As**.

Now remove the original layer and add your new layer saved to your content.

Save the map by clicking **Save > Save As**. Keep in mind, every map within our organization must have a unique name. Using your email name in the new title is a way to avoid issues. Now you have your own copy of the map.



Open App

Now, go to the mobile app and login.

You should see your map and have access to all the data.

Customize App

Go to the Field Maps Designer at <https://www.arcgis.com/apps/fieldmaps/>. Here you can make all the changes to the mobile application.

